



BRICK
MANAGEMENT + LETTINGS

33 Cornmill House 4Wharf Street, Deptford, London, SE8 3FY

£2,150 Per month



33 Cornmill House 4Wharf Street, Deptford, London, SE8 3FY

£2,150 Per month

New to the market this well presented, spacious seventh floor two bedroom executive apartment is located in the popular Cornmill House development.

The property itself benefits from an entrance hallway with utility cupboard leading to a large open plan living area with wooden flooring and access to a private balcony, stylish white kitchen with integrated appliances, two double bedrooms, two luxury bathrooms, neutral decoration throughout and secure video access.

Residents have access to an on site concierge service.

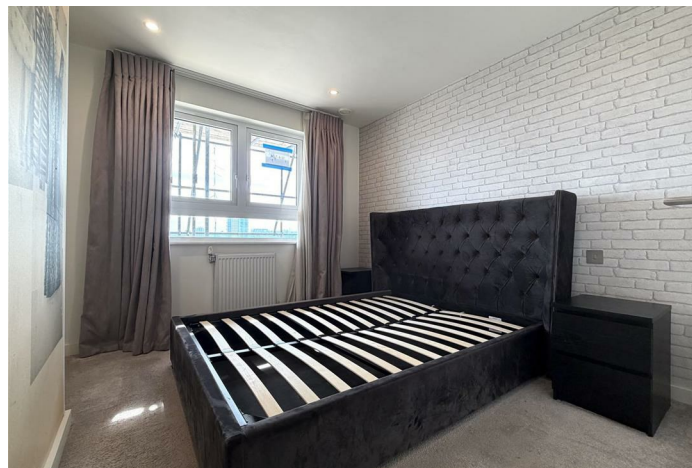
Cornmill House is located on the bank of the River Thames, opposite Twinkle Park, just a short walk from Deptford station and Greenwich DLR station, plus close to a numerous local supermarkets, restaurants and coffee shops.

The apartment doesn't come with allocated parking but the roads immediately in front of the block offer free on street parking.

Description



Situation

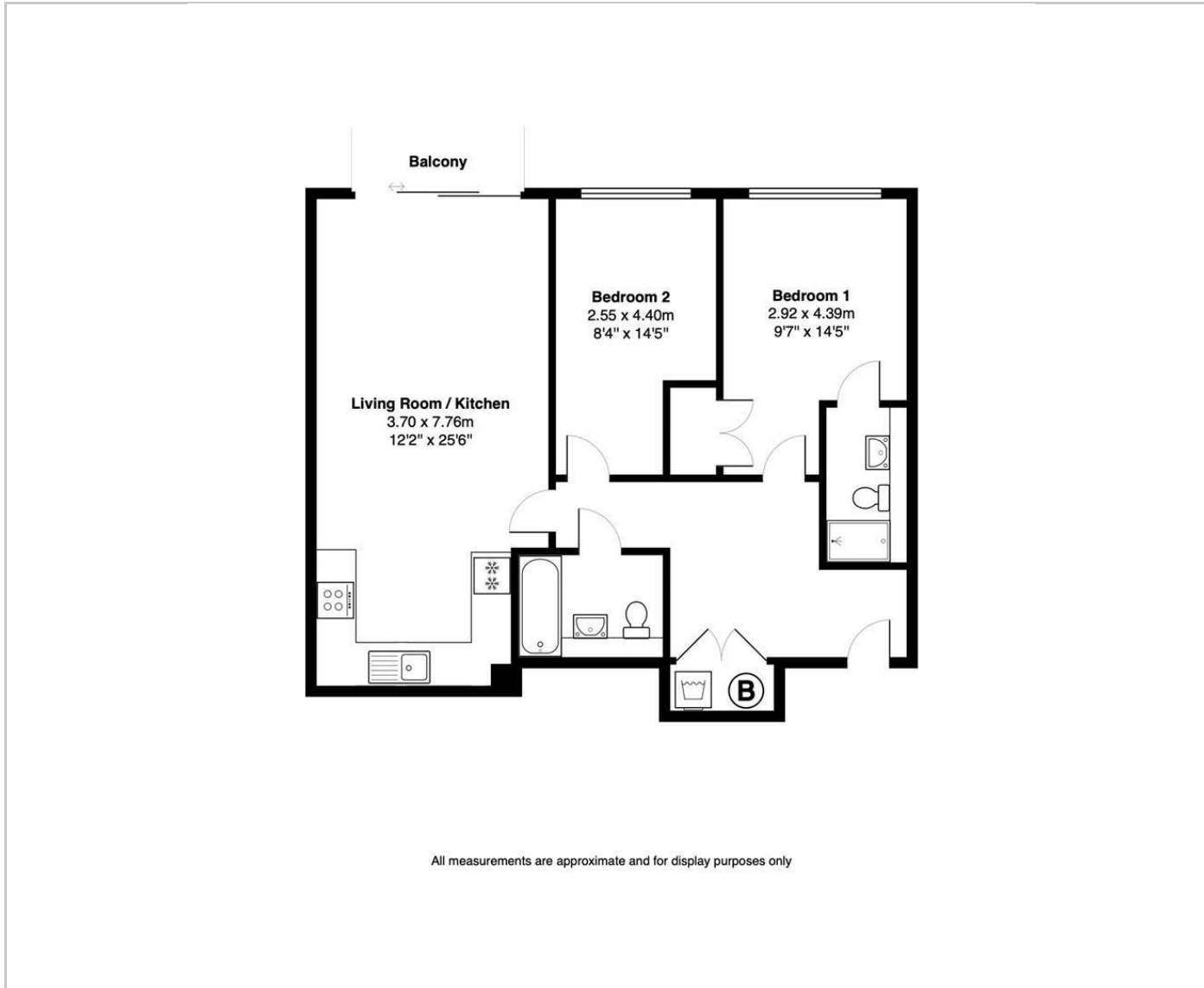


Unfurnished

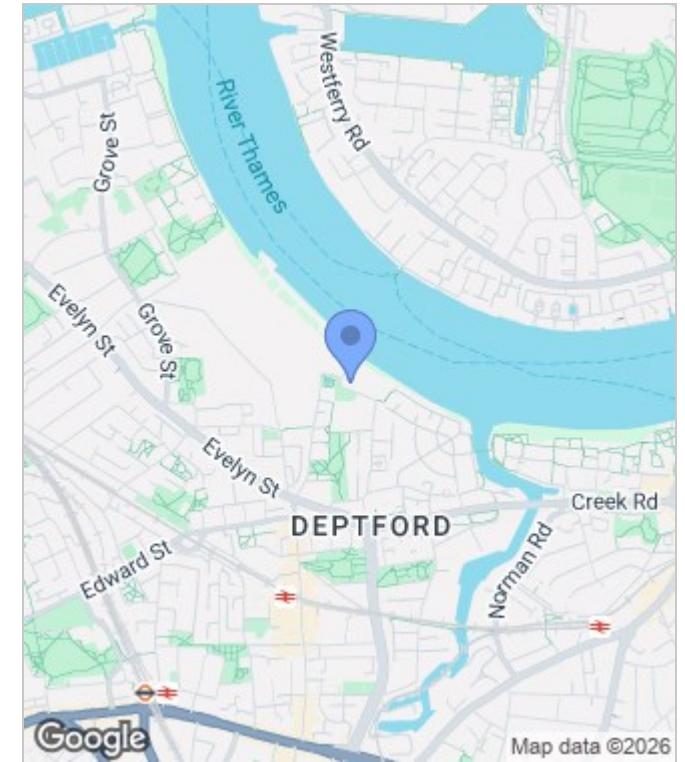
Council Tax Band: E

Available: 1st June 2026

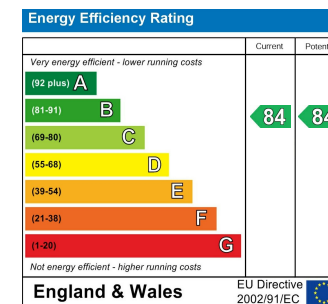
Floor Plans



Area Map



Energy Performance Graph



These particulars, whilst believed to be accurate are set out as a general outline only for guidance and do not constitute any part of an offer or contract. Intending purchasers should not rely on them as statements of representation of fact, but must satisfy themselves by inspection or otherwise as to their accuracy. No person in this firm's employment has the authority to make or give any representation or warranty in respect of the property.